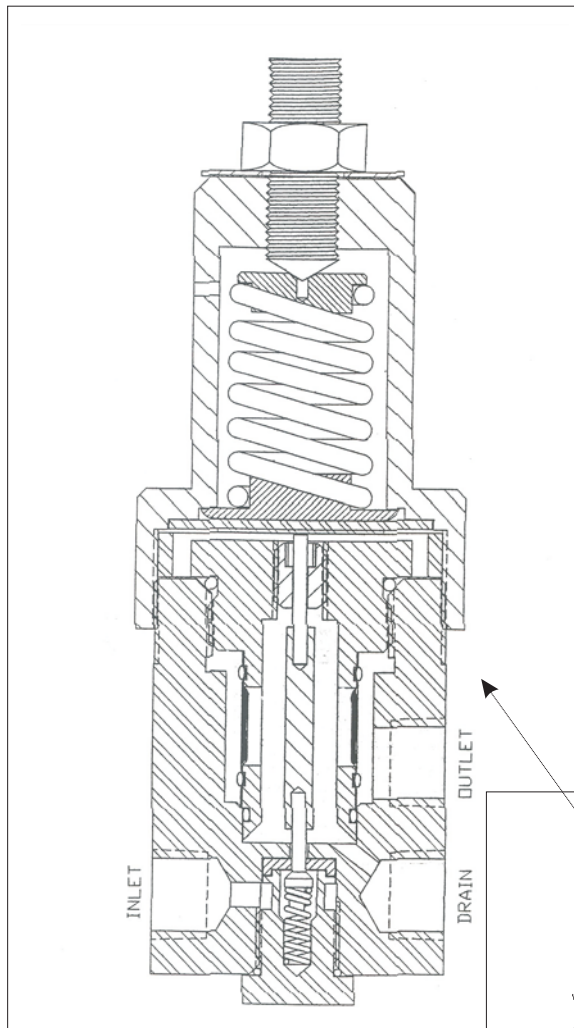


WELKER®

Engineering Company

ISO-9001
CERTIFIED
SINCE 1992



Model LEFR-1

Specifications subject to change without notice.
Drawings/Photos may be shown with optional equipment.

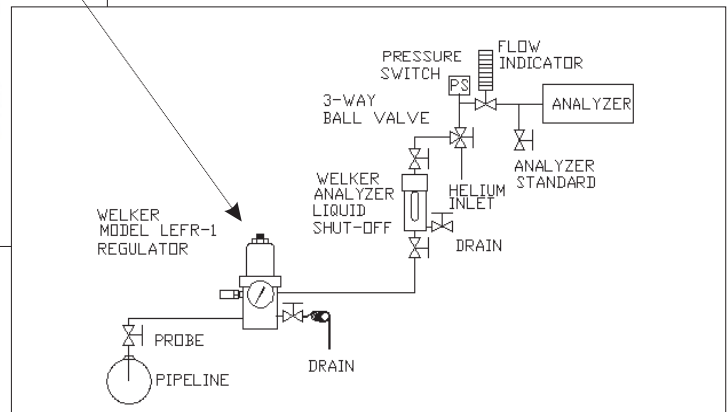
Welker® Liquid Eliminator Filter Regulator

Model: LEFR-1

The Welker Liquid Eliminator Filter Regulator is designed specifically for use with on-line analyzers. Installed properly in analyzer sample lines, these regulators effectively eliminate free liquids from entering gas analyzers. The LEFR-1 employs a flat copolymer membrane to ensure that liquids are knocked out without affecting the natural gas flow.

This liquid eliminator is located down stream from the point of regulation so that liquids which may be created by the Joule-Thomson effect are removed prior to flow into the heated tubing run. Design of the regulator places the outlet port well above the drain so that the gas sample passing through the element is not flowing through any accumulated liquid.

The LEFR-1 is another *Welker Original Product* designed to improve the quality of your gas sample.



Features

- Provides a regulated sample supply to chromatographs, gravimeters, calorimeters and other on-line analyzing equipment.
- Natural gas sample is unaltered by liquid removal.
- 316 stainless steel construction.
- Accumulated liquids may be manually drained or the system can be outfitted with a Welker Automatic Liquid Dump.
- Diaphragm design for increased sensitivity.
- Range springs for 0-25 psig, 0-50 psig or 20-100 psig.
- Kel-F seat, 1/4"NPT ports standard.

Welker®Global Solutions for Your Needs!

P. O. Box 138 Sugar Land, TX 77487-0138
Phone: (281) 491-2331 Toll Free: (800) 776-7267 Fax: (281) 491-8344
www.welkereng.com