



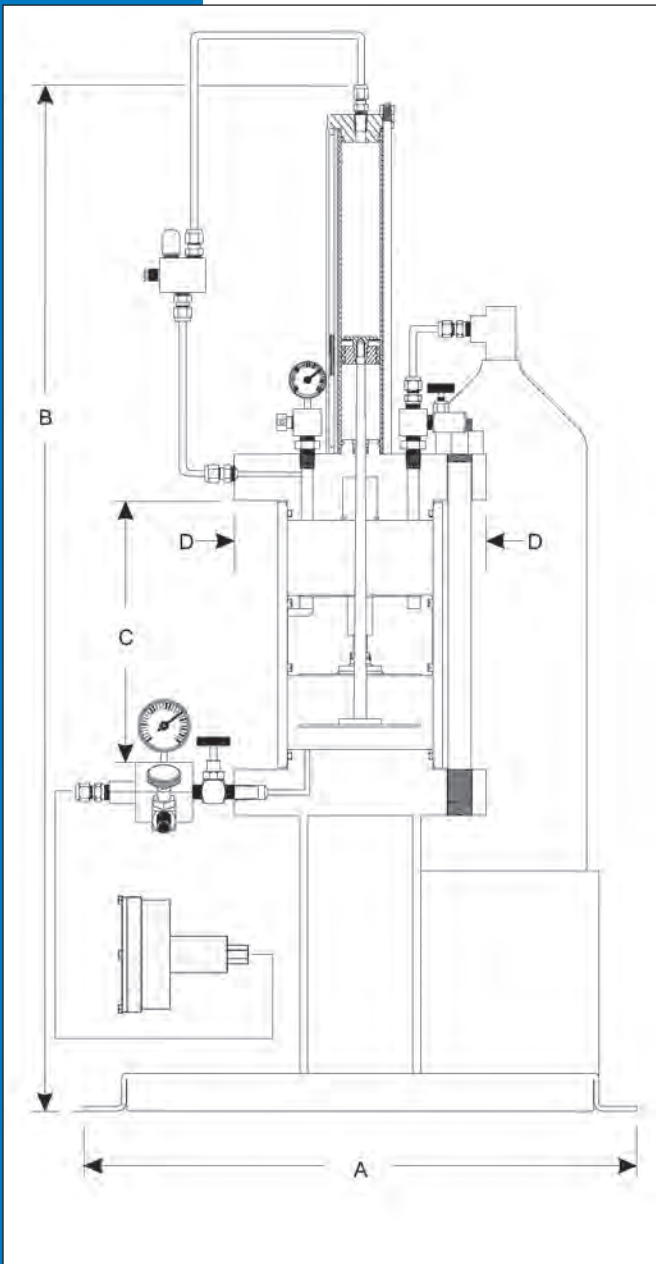
# Welker® Light Liquid Hydrocarbon Sampler

*Style LS-7*

*The LS-7 system is capable of maintaining all products in their original phase. The LS-7 has a mixing system to ensure a uniform mixture prior to sample draw off and transport.*

## General Description

- The LS-7 Light Liquid Hydrocarbon Sampler is a skid-mounted sampling system. The system consists of the sample pump, sliding piston sample container, inlet manifold and the back pressure cylinder. 2,160 psi (149 bar) working pressure.
- The LS-7 is used for LPG, NGL, propane, butane, natural gasoline and/or condensate. High vapor pressure products, when sampled, must be maintained at pipeline pressure to preserve the liquid phase of the product.

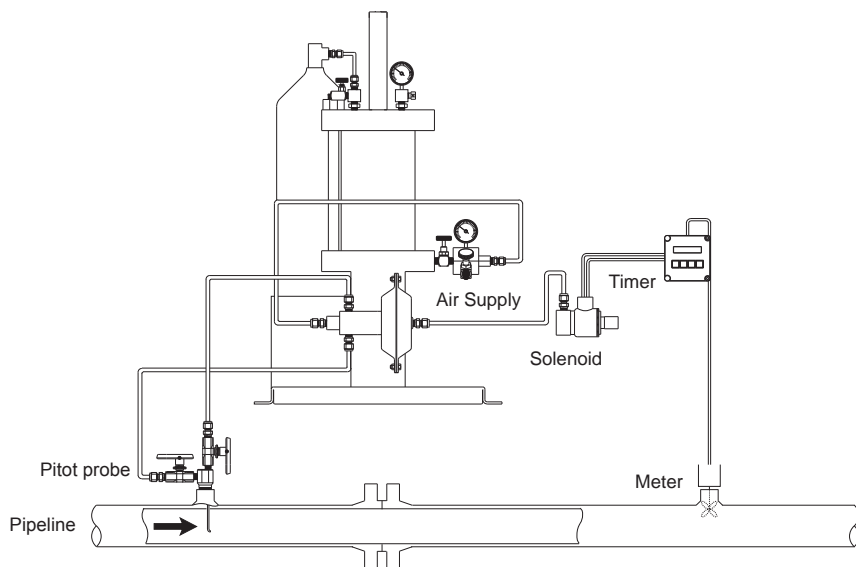


Capacity	A	B	C	D
2600cc	24"	42.75"	10"	9.5"
1 Gal.	24"	51"	13.75"	9.5"
1.5 Gal	24"	61"	20"	9.5"
3 Gal.	24"	65"	20.5"	12"
5 Gal.	24"	88"	31.5"	12"

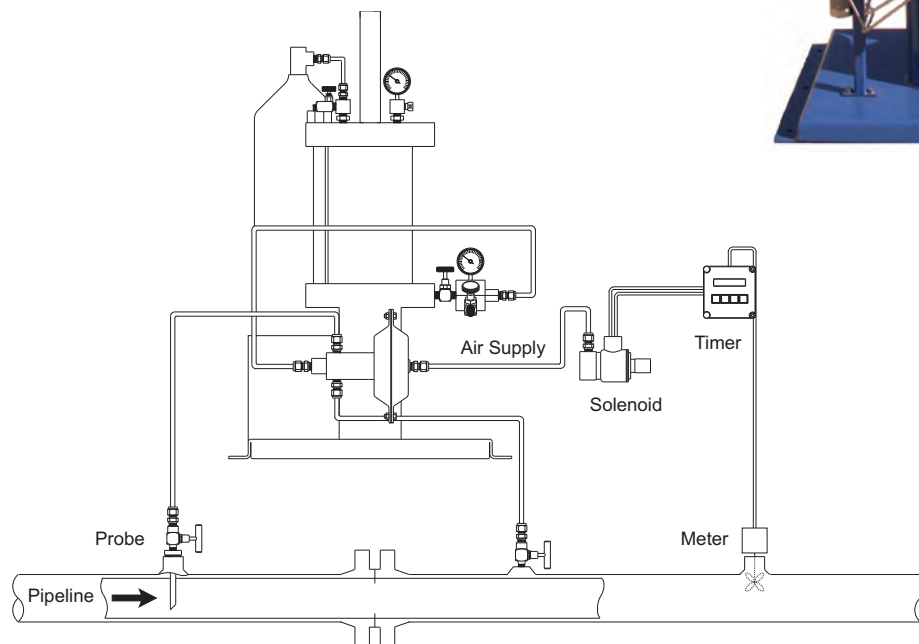
Specifications subject to change without notice.  
Drawings/Photos may be shown with optional equipment.

Welker® ... Global Solutions for Your Needs!

# LS-7 Typical Installation



Specifications subject to change without notice.  
Drawings/Photos may be shown with optional equipment.



Preferred hook-up across a pressure drop to create flow through the sampler ↑



13839 West Belfort • Sugar Land, TX 77498-1671  
Telephone: (281) 491-2331 • Toll Free: (800) 776-7267 • Fax: (281) 491-8344  
Sales Email: Sales@welkereng.com • Web Site: www.welkereng.com