

**WELKER®**

ISO-9001  
CERTIFIED  
SINCE 1992



# Welker® BIP Bellows Injection Pump

*The most important product ever to be designed  
specifically for chemical/odorant pumps!  
(Metering or injection types)*

## **General Description**

The Welker® BIP Series of Injection Pumps are displacement pumps used to inject a liquid chemical into a pressurized pipeline. Odorant, acid, methanol and inhibitor chemicals are just a few of the products that can be injected with the BIP Series of pumps. The BIP incorporates a Teflon® bellows that separates the chemical being injected from the working side of the pump, as well as from the outside environment. Thus, the hydraulic piston and seals are not subjected to the harsh environments of the chemicals which will in-turn prolong seal life and minimize the downtime needed for repairs. Unwanted leaks, odors and spills are maintained within the bellows, maximizing environmental protection.

## **Features**

- Typical repairs can be completed without exposing the product to atmosphere..
- Stainless Steel/Teflon® Check Valves.
- Environmental Protection from unwanted spills and leaks.
- Simplified Design keeps replacement parts to a minimum and repairs quick and easy.

## **Applications**

- Odorant Systems;, Mercaptan, Sulfide and Thiophene Injection
- Corrosion Inhibitor Injection
- Methanol Injection
- Acid Injection

**Welker® ... Global Solutions For Your Needs!**

# Welker® Bellows Injection Pump

## Specifications\*

### Actuator:

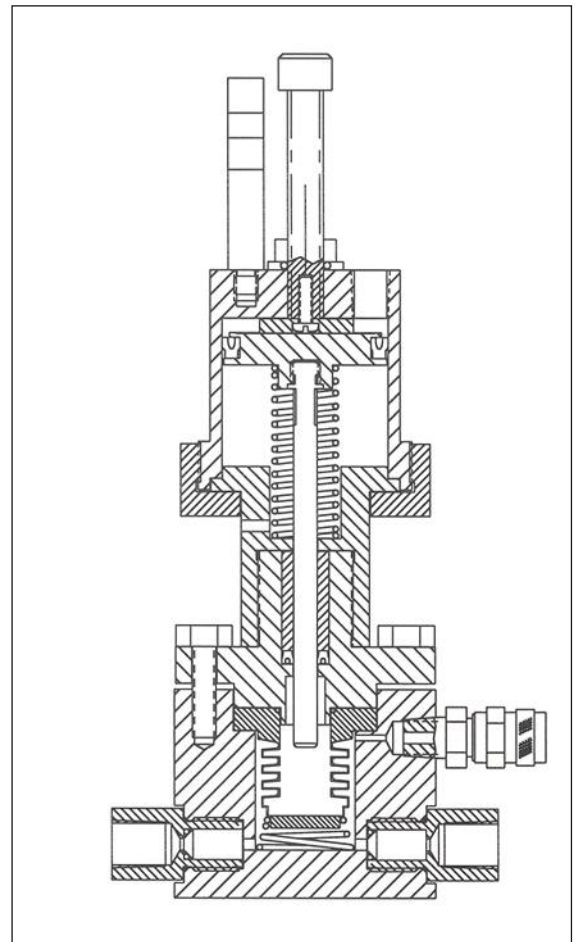
Operating Pressure..... BIP-1, BIP-2 & BIP- 4: 100 psi Max  
 Supply Pressure  
 BIP-3: 150 psi Max Supply Pressure  
 Material..... Anodized Aluminum  
 Supply Connection..... BIP-1 & BIP-3: Female, 1/4" NPT  
 BIP-2: Female, 1/8" NPT

### Wetted Parts:

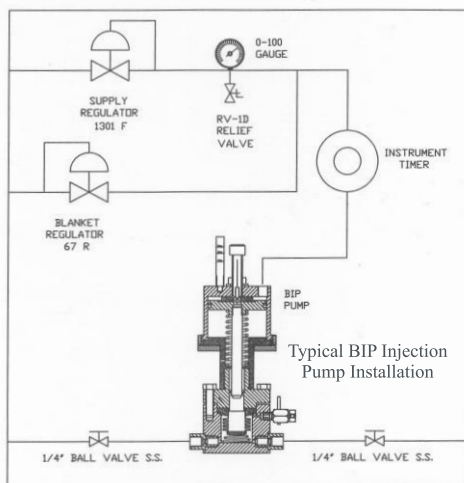
Injection Body..... 316 S.S.  
 Check Valve Body..... 316 S.S.  
 Check Valve Cartridges..... 303 S.S.  
 Check Valve Connections.....Female, 1/4" NPT  
 Bellows..... Teflon®  
 Hydraulic Seal..... Polyurethane  
 Hydraulic Piston..... 316 S.S. / Nickel Plated

### Pump:

Total Pump Weight..... 5 lbs.



\*Specifications subject to change without notice.  
 Drawings/Photos may be shown with optional equipment.



P. O. Box 138 • Sugar Land, TX 77487-0138  
 Phone: (281) 491-2331 • Toll Free: (800) 776-7267 • Fax: (281) 491-8344  
 Email: Sales@welkereng.com • Web Site: www.welkereng.com